

# THAILAND / Northern Khao Lak Bay

1 : 12.500

## IKONOS - January 30, 2003 - PRE-DISASTER IMAGE

## IKONOS - December 29, 2004 - POST-DISASTER IMAGE



**Ikonos Data**

**Legend**

- Major Road (paved)
- Major Road (unpaved)
- Dirt Road
- Coastline before Tsunami
- Affected Area

**Interpretation**

The map shows the northern Khao Lak Bay, Thailand before and after the devastating Tsunami flood wave of December 26, 2004. In the northern edge the Laem Pakarang spit can be seen. The flood wave has washed away several tourist resort buildings, forest plantations and one can see how the coast lines were severely destroyed. The images were taken on January 30, 2003 and December 29, 2004, respectively. Along the shore line a strip of about 1000 m to 1500 m was washed away by the flood wave. As most parts of the Khao Lak Bay area and neighbouring beaches are of similar topographic shape it is expected that similar destruction has occurred in the surroundings.



1 : 12.500

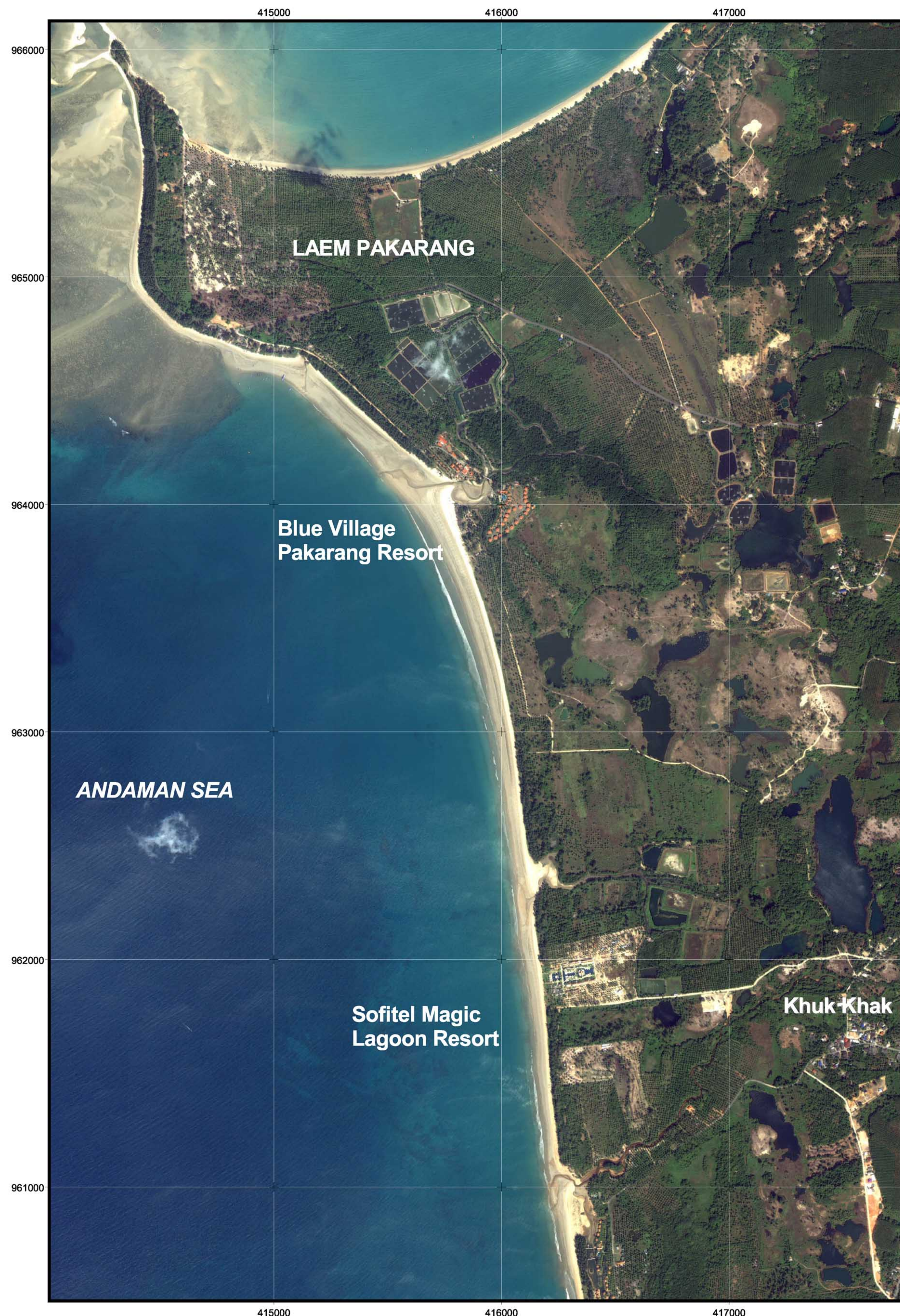
Projection: UTM Zone 47 N  
Spheroid: WGS84  
Datum: WGS 84

**Data Source**

IKONOS imagery provided through

CRISP  
National University of Singapore

SPACE IMAGING  
Visual Information. Visible Results.



© DLR 2004